



World's Fair Chess Table and Bench Installation

All site work is the responsibility of the installer; we are offering recommendations only.

Select a level surface, preferably with hardscape such as concrete or brick pavers. Alternately a level area of crushed gravel would be acceptable. One table set requires an area that this 7' 4" x 4' 6".

Item	Description - Size	Weight
World Fair Table	World Fair Table 32" x 32" x 29" high, assembled to iron base.	490 pounds
Armless Bench	World's Fair Bench, 4' long, without arms, 4' long x 27" wide x 34" high	215 pounds

When placing table top, a white square should be located in the lower right corner in front of the bench locations.

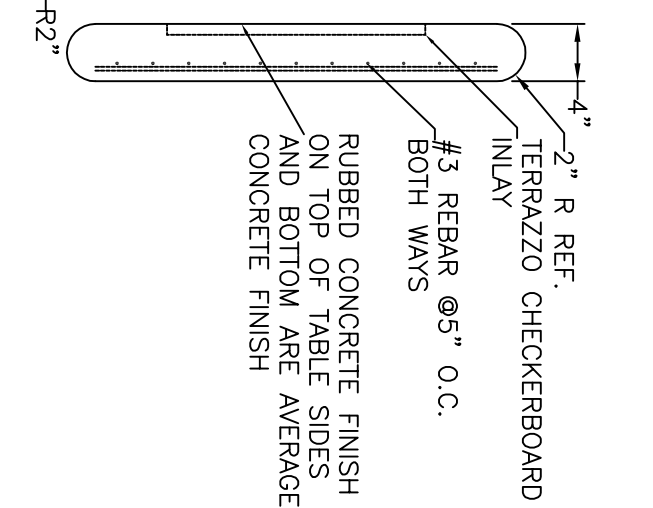
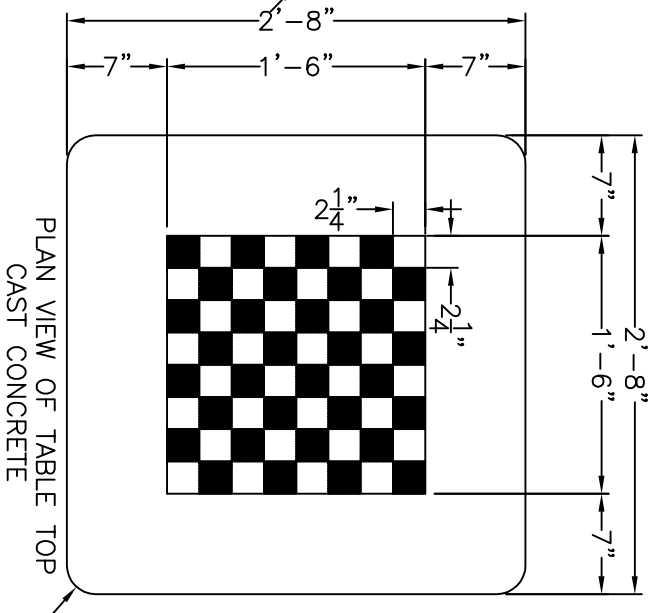
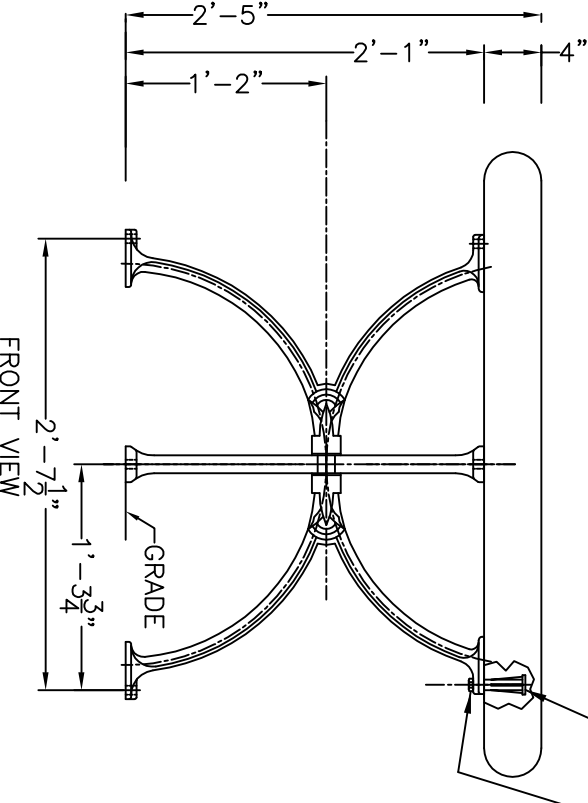
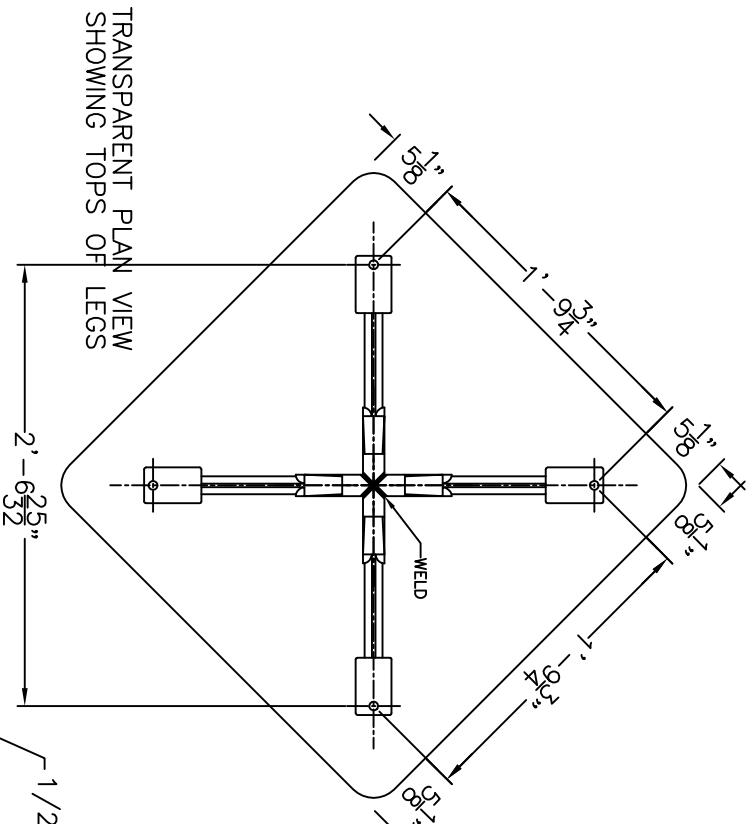
The table and the benches are provided with 5/8" diameter holes in the iron base. Use a 1/2' x 4" long wedge type anchor bolt to secure furniture to concrete footings, not provided by Concrete Classics.

Benches should be located square to the table edge allowing for 1" between the table top and the front edge of the seat.

Concrete is composed of stone aggregate of various sizes. Due to its organic nature, color may vary from piece to piece. In precast concrete, there will be seams. Though they are polished down in our finishing process, they may still be visible. Concrete tables will only crack under extreme conditions, however minor hairline cracks or crazing may appear. These are natural and part of the nature of curing concrete.

Concrete can be cleaned with non-abrasive cleaners, hand scrubbing or power washing. While we do apply a concrete sealant to the table tops, the stools are left natural. Concrete sealant should be re-applied every 3 - 5 years, after a thorough cleaning. Concrete is a porous stone and it is expected that some environmental conditions will stain the concrete, such as tree sap and heavy pollution, even with the concrete sealant applied.

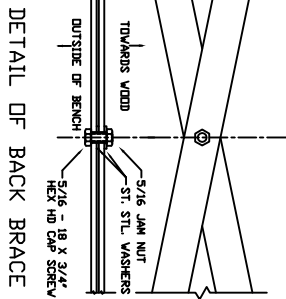
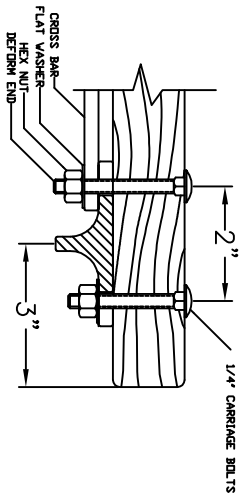
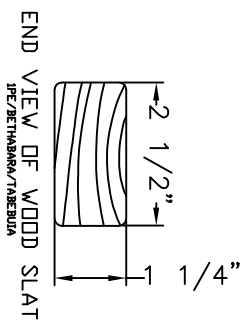
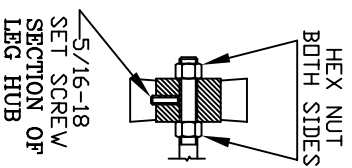
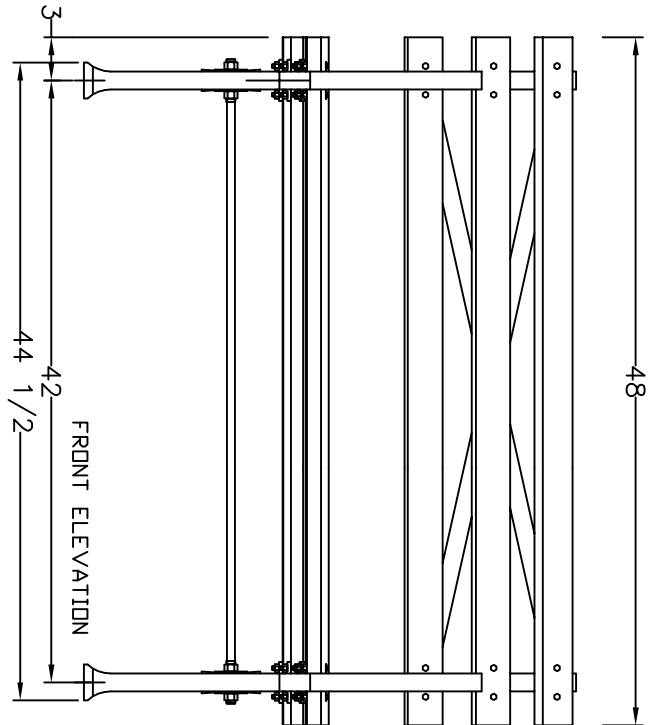
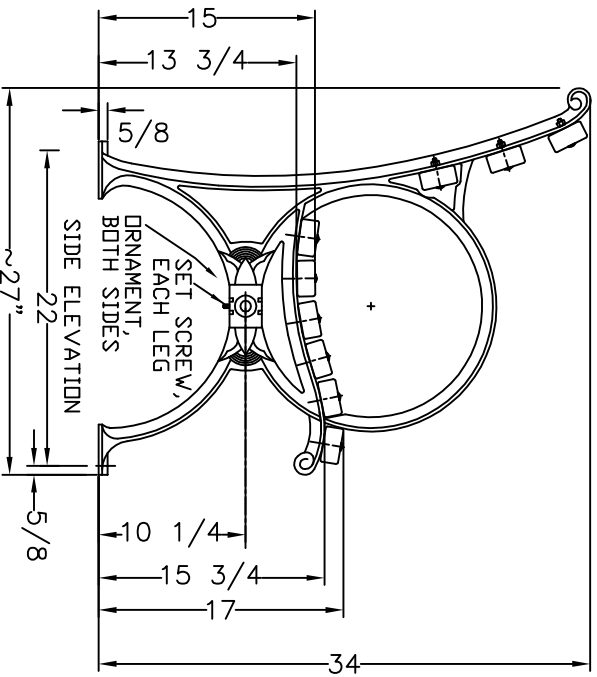
The sealant we use is available from Professional Products of Kansas, We apply 2 coats of PWS-8:
<http://watersealant.com/index.php/products/anti-graffiti-system-2/>



1/2" ANCHOR CAST IN PLACE, 4 PLACES.
 1/2-13 x 3 1/2" HX HD BOLT STAINLESS STEEL
 CONNECTS CONCRETE TOP TO CAST IRON BASE

CONCRETE CLASSICS
 203 560 9097
www.Concrete-Classics.com

#6732 WORLD'S FAIR GAME TABLE	
Scale 3"=1'-0"	Date 4/6/98
GENERAL LAYOUT	
MAT'L: CAST DUCTILE IRON	Drawn S.L.A.
	Rev.: 4/26/99
	Rev.: 7/25/14
	#CC-6732-FX



MATERIALS:
X-BRACING: 3/16" X 1 1/4" HOT ROLLED STEEL
BENCH LEGS: CAST DUCTILE IRON
WOOD SLATS: IPE (BETHABARA)/TABEUBIA
SMALL FASTENERS (CARRIAGE BOLTS, NUTS AND WASHERS) STAINLESS STEEL
TIE ROD: 5/8" DIA HOT ROLLED STEEL WITH 5/8 - 11 CUT THREADS & STEEL HEX NUTS

CONCRETE CLASSICS
 203 560 9097
 www.Concrete-Classics.com

6737 WORLDS FAIR BENCH	
Scale: FAX	Date 7/22/96
4' LONG BENCH	Drawn S.L.A.
MAT: SEE NOTES	Rev. 4/19/01
#CC-6737-4 FX	