



## World's Fair Bench Assembly

Unpack and verify parts count.

|                    |        |  |   |                                      |                              |   |
|--------------------|--------|--|---|--------------------------------------|------------------------------|---|
| 8' L               | 3 legs |  | 1 round bar 93" L,<br>4 large nuts        | 2 sets cross bracing 45" L           | 9 slats Ipe wood, 8' L       | 8x 1/4"-20 carriage bolts – 2 1/4" L<br>46x 1/4"-20 carriage bolts – 2" L |
| 4' L<br>Or<br>6' L | 2 legs |  | 1 round bar 45" or 69" L,<br>4 large nuts | 1 set cross bracing 42" or 65 3/4" L | 9 slats Ipe wood, 4' or 6' L | 4x 1/4"-20 carriage bolts – 2 1/4" L<br>32x 1/4"-20 carriage bolts – 2" L |

Stand the legs up and install the tie rod with nuts on both sides of the outside legs leaving all loose for the time being.

Install the wood and x-braces on the backrest. The x-braces go to the rear of the bench, not between the wood and the leg. NOTE – use the 2 1/4" long bolts in these locations. Leave the nuts loose.

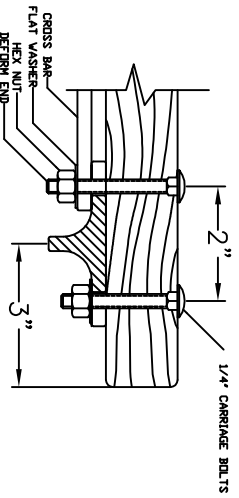
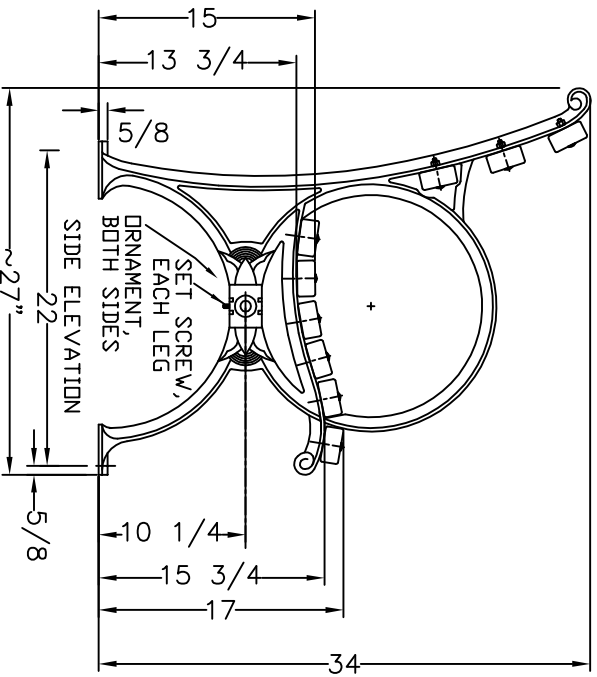
Install the wood on the seat. Leave the nuts loose.

Get a straight 2x4 and set it against the feet of the legs so one foot of each leg is touching the 2x4. This way you can make sure that the legs are lined up. Now, using a 2' framing square, check to see that the legs are at right angles to the 2x4. Also check to see that the legs are plumb. Of course, you must be working on a level floor.

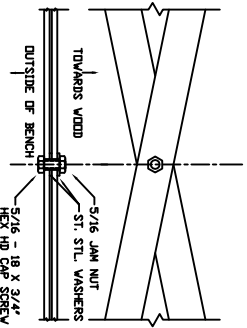
Now, keeping the bench legs all square and plumb and making sure that all the slat ends are even, tighten all the nuts. When you tighten the nuts watch to make sure that you don't tighten them so much that the bolt heads are drawn into the surface of the slat which can happen easily with softer wood. Tighten the bolts evenly on both sides of the leg so that one bolt doesn't make the bench stand crooked.

Inspect the bench from a distance to make sure it looks good and straight. Hammer over the ends of the bolts so the nuts can't be removed and so nobody can be cut by the sharp edges.

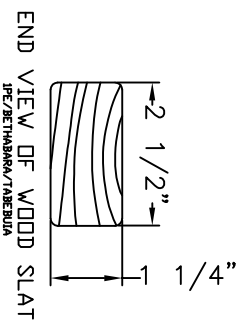
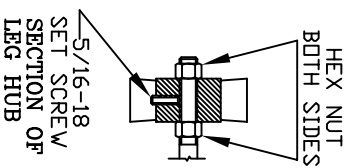
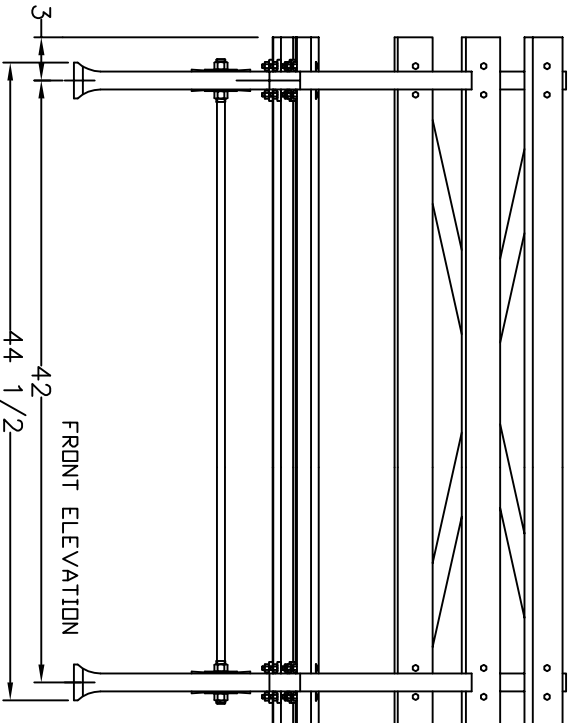
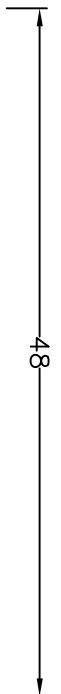
Touch up the nuts and bolts at the back and bottom of the bench, at the tie rod and anywhere paint has chipped off from handling. This completes the assembly.



SECTION - LEG, BRACE & WOOD



DETAIL OF BACK BRACE



**MATERIALS:**  
**X-BRACING:** 3/16" X 1 1/4" HOT ROLLED STEEL  
**BENCH LEGS:** CAST DUCTILE IRON  
**WOOD SLATS:** IPE (BETHABARA)/TABEUBIA  
**SMALL FASTENERS** (CARRIAGE BOLTS, NUTS AND WASHERS) STAINLESS STEEL  
**TIE ROD:** 5/8" DIA HOT ROLLED STEEL WITH 5/8 - 11 CUT THREADS & STEEL HEX NUTS

**CONCRETE CLASSICS**  
 203 560 9097  
 www.Concrete-Classics.com

|                               |              |
|-------------------------------|--------------|
| <b>6737 WORLDS FAIR BENCH</b> |              |
| Scale: FAX                    | Date 7/22/96 |
| 4' LONG BENCH                 | Drawn S.L.A. |
| MAT: SEE NOTES                | Rev. 4/19/01 |
| #CC-6737-4 FX                 |              |