



Fixed Concrete Table Installation

All site work is the responsibility of the installer, we are offering recommendations only.

Select an accessible area to machinery and prepare the area to accept the table and stools. One table set requires an area that this 6' 6" x 3'. When using stools on all 4 sides, this requires a 6' 6" x 6' 6" area.

We recommend placing a 14" – 18" diameter sono tube in the ground to contain the concrete for the table post. See drawing for the layout and depth requirements. Note that there is a horizontal hole in the footing area of the table and stools. This hole is intended for a piece of rebar, 4" longer than the width of the table and stools, to slide through and 'lock' the footings into the site poured concrete.

Item	Description – Size	Weight
466- table	Fixed Table, with concrete post leg, 32" x 32" x 53" tall	550 pounds
466B- stool	Round Stool with footing, 18" diameter x 24" tall	460 pounds

Proper orientation of the table requires a white square to be located in the lower right corner in front of the stool locations.

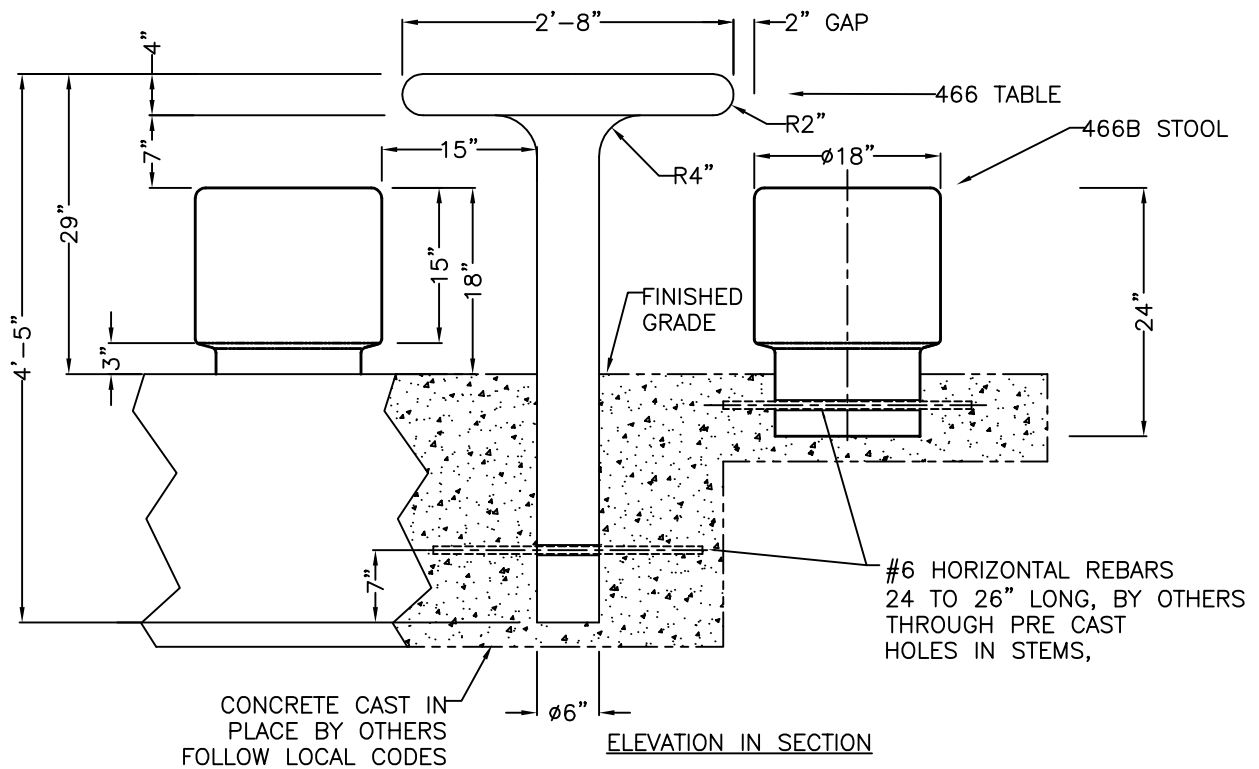
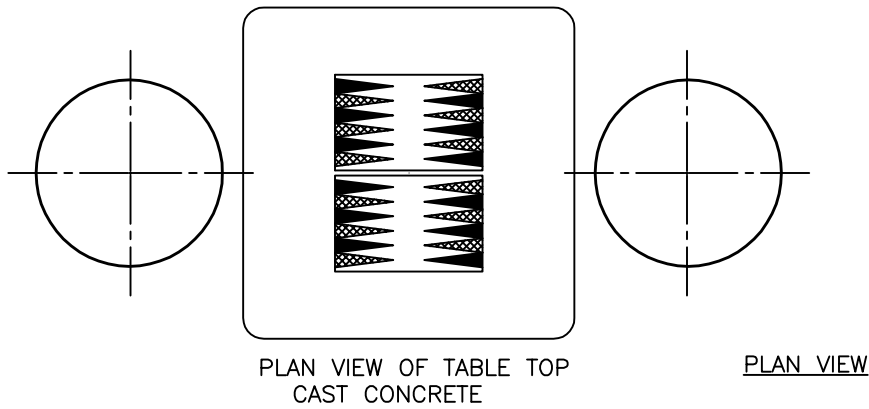
After preparing the hole and locating sonotube to correct depth, we recommend building a temporary wooden structure to hold the table in a vertical and level orientation while the concrete sets. Use nylon sling straps to lift table and stools into place with an appropriate piece of machinery. Stools can be placed directly on crushed stone for leveling, fill concrete around prepared area. Note the table height is 29" above grade and stool height is to be 18" above finished grade.

Concrete is composed of stone aggregate of various sizes. Due to its organic nature, color may vary from piece to piece. In precast concrete, there will be seams. Though they are polished down in our finishing process, they may still be visible. Concrete tables will only crack under extreme conditions, however minor hairline cracks or crazing may appear. These are natural and part of the nature of curing concrete.

Concrete can be cleaned with non-abrasive cleaners, hand scrubbing or power washing. While we do apply a concrete sealant to the table tops, the stools are left natural. Concrete sealant should be re-applied every 3 – 5 years, after a thorough cleaning. Concrete is a porous stone and it is expected that some environmental conditions will stain the concrete, such as tree sap and heavy pollution, even with the concrete sealant applied.

The sealant we use is available from Professional Products of Kansas, We apply 2 coats of PWS-8:
<http://watersealant.com/index.php/products/anti-graffiti-system-2/>

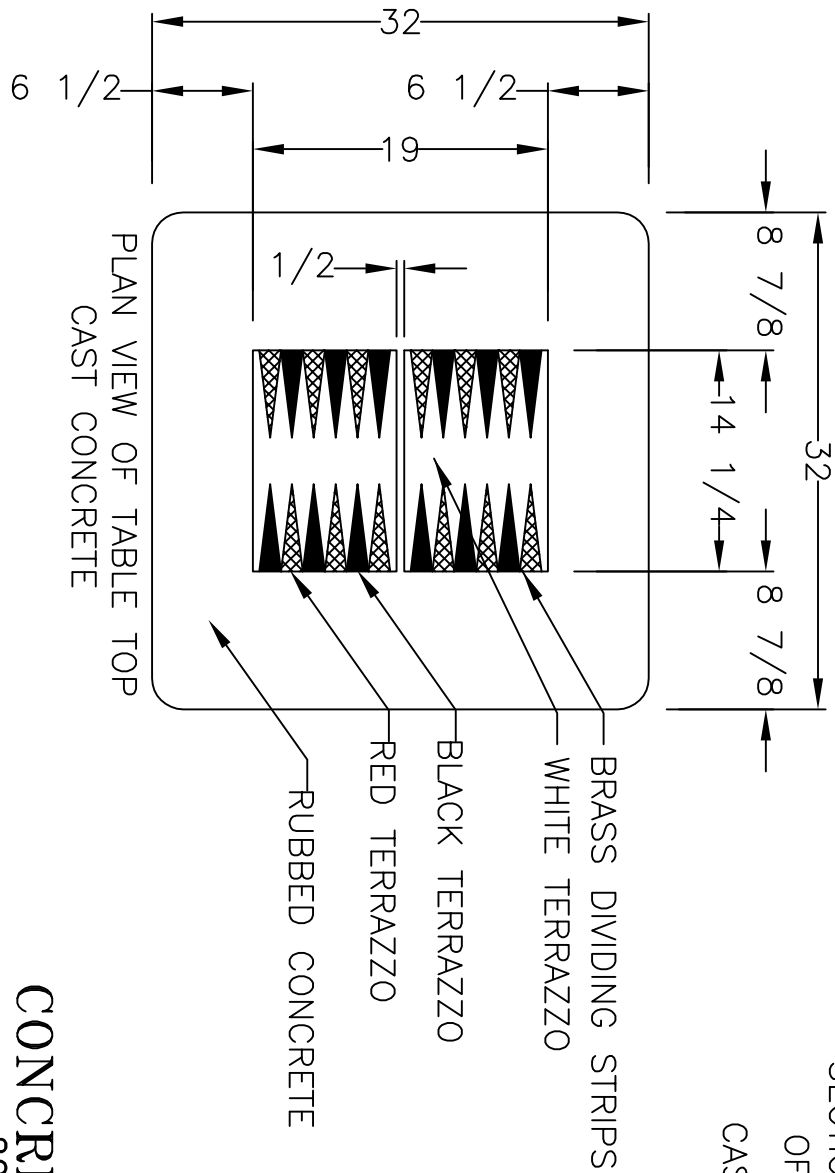
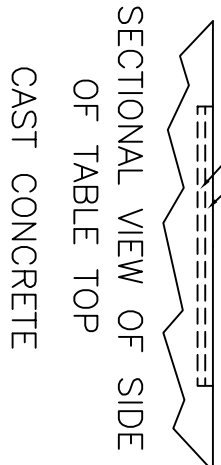
NOTE:
NOTE HOW THE SEATS HAVE TO FACE
THE SIDE OF THE BACKGAMMON BOARD.



CONCRETE CLASSICS
203 560 9097
www.Concrete-Classics.com

Date Revised:	Drawn By:	466 TABLE LAYOUT		
2/27/09	S.L.A.	Scale: FAX SIZE	Date: 5/21/07	Drawn: S.L.A.
11/29/12	S.L.A.	PERMANENT TABLE & SEATS BACKGAMMON INLAY		
10/3/13	S.L.A.			
		MAT'L: CAST STONE	#CC-466 LAYOUT BKG FX	

1/2" DEEP TERRAZZO CHECKERBOARD
WITH BRASS DIVIDERS
1/2" DEEP MORTAR BED



THIS BACKGAMMON TABLE TOP CAN BE
SUBSTITUTED FOR THE STANDARD
CHECKERBOARD ON ANY OF THE CAST
STONE GAME TABLES: #466, 466A & 466C.

CONCRETE CLASSICS
203 560 9097
www.Concrete-Classics.com

466 GAME TABLE - BACKGAMMON		
Scale FAX	Date 8/20/14	Drawn S.L.A.
BACKGAMMON INSERT		
MAT: CAST STONE	#CC-466 BG	